

Making Health Equity a Priority

Plan4Health, December 16, 2015
Shawn McIntosh
Program Manager, Center for Public Health Policy



WHAT IS HEALTH?

Health is a state of complete physical, mental and social well-being and not merely the absence of disease or infirmity

Preamble to the Constitution of the World Health Organization as adopted by the International Health Conference, New York, 19-22 June, 1946; signed on 22 July 1946 by the representatives of 61 States (Official Records of the World Health Organization, no. 2, p. 100) and entered into force on 7 April 1948. The Definition has not been amended since 1948.



WHAT IS HEALTH EQUITY?

Health equity is the principle underlying a commitment to reduce—and, ultimately, eliminate—disparities in health and in its determinants, including social determinants. Pursuing health equity means striving for the highest possible standard of health for all people and **giving special attention to the needs of those at greatest risk of poor health, based on social conditions.** (2014, P. Braverman)

1. Acknowledge that equity is more than any one, single intervention.

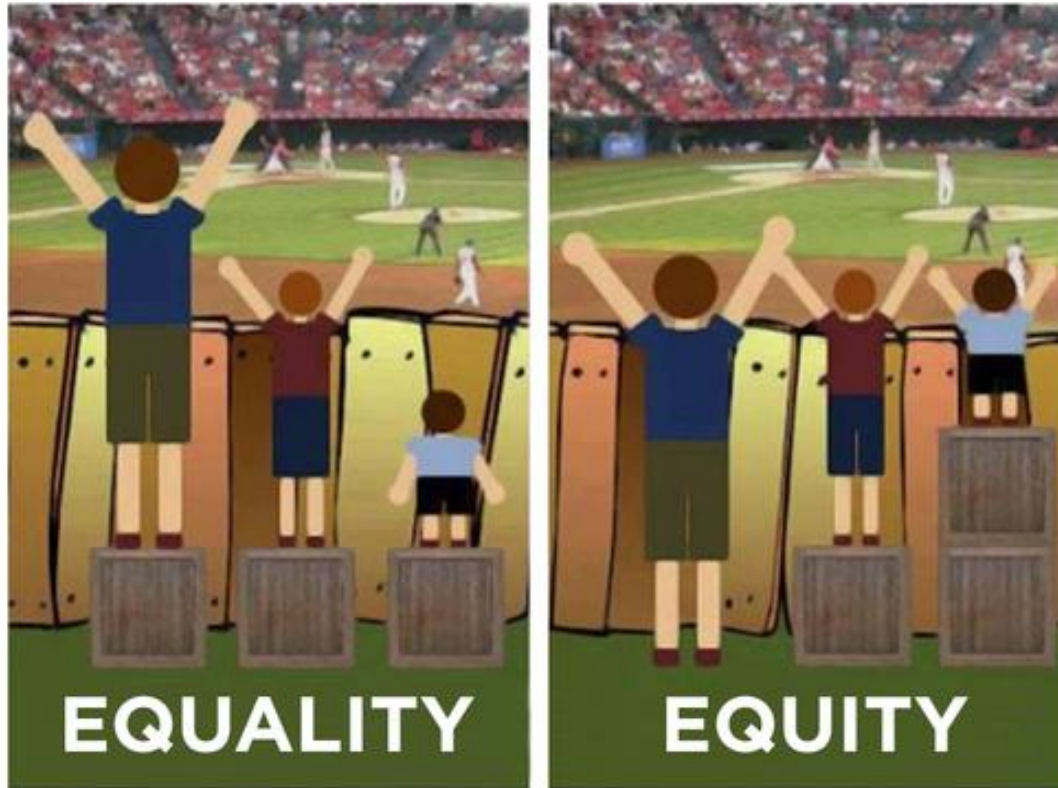


Image credit: adapted from an image adapted by the City of Portland, Oregon, Office of Equity and Human Rights



2. Have an open and honest dialogue.



Sculpture by Issac Cordial "Politicians discussing global warming"

3. Partner, Partner, Partner



4. Be mindful of history.



Pictured above: United Farmworkers protest. ((Walter P. Reuther Library, Wayne State University)

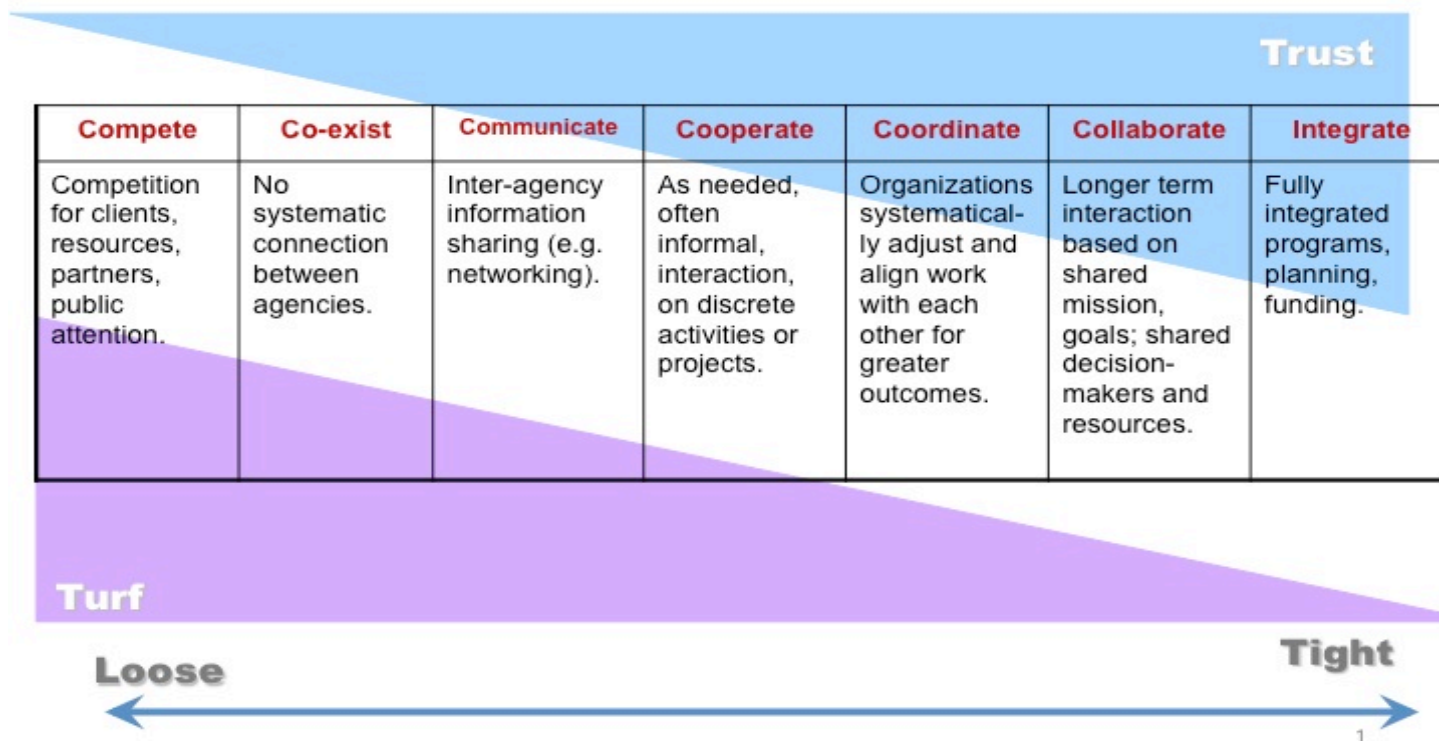
5. Let go of your agenda.



Your priority might not be the communities priority.

6. Build Trust

The Collaboration Continuum



Source: <http://www.collaborationforimpact.com/collaborative-approaches>

7. Follow the data, but.....



Photo credit: [higherinsights](#), [Leonard John Matthews](#)



8. Community ownership is paramount!



Photo credit: Green Guerillas

9. Pay attention to process.

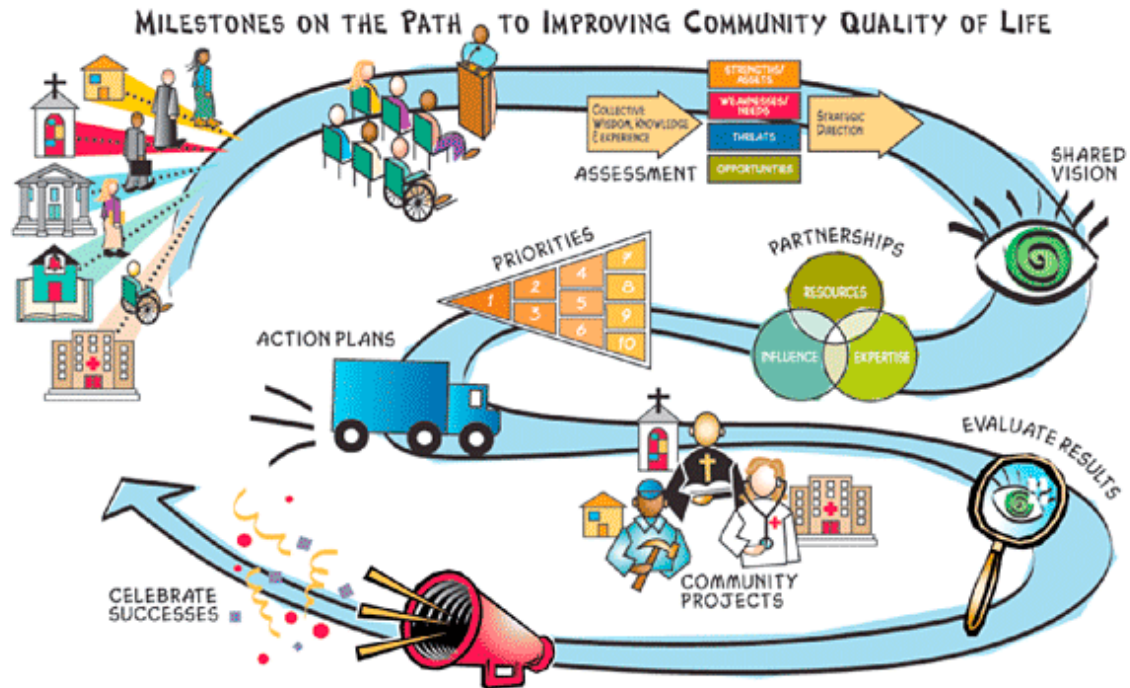


Photo credit: <http://www.comm-dev.org>

10. Know when to step aside:

EMPOWERING THE LEADER IN ALL OF US



Photo credit: <http://www.beyondourrails.org/community/leadership>

RESOURCES

<http://www.apha.org/topics-and-issues/health-equity>

- [American Journal of Public Health Supplement: "Beyond Health Equity"](#)
- [White House Discussion: How We Achieve Health Equity in Our Lifetime](#) (Public Health Newswire)
- ["What Are Health Disparities and Health Equity? We Need to Be Clear"](#) by Paula Braveman (PDF)
- [Determinants of Equity Report](#) (Seattle King County, Washington) (PDF)
- [The Roots of Health Inequity: A Web-Based Course for the Public Health Workforce](#)
- [Making the Economic Case for Health Equity: Tribal and State Solutions](#) (ASTHO) (video)
- [Equity & Empowerment Lens](#) (Multnomah County, Oregon)
- [Healthy People 2020 Social Determinants of Health](#)

HEALTH IN ALL POLICIES

A Guide for State and
Local Governments



Health in All Policies: A Guide for State and Local Governments was created by the Public Health Institute, the California Department of Public Health, and the American Public Health Association in response to growing interest in using collaborative approaches to improve population health by embedding health considerations into decision-making processes across a broad array of sectors. The Guide draws heavily on the experiences of the California Health in All Policies Task Force.



FIVE KEY ELEMENTS OF HEALTH IN ALL POLICIES

Promote health, equity, and sustainability.

Support intersectoral collaboration.

Benefit multiple partners.

Engage stakeholders.

Create structural or process change.



To download *Health in All Policies: A Guide for State and Local Governments*, visit:

<http://www.apha.org/hiap>



THANK YOU!

Q & A